

EZ Cup Instructions

STEP 1 →

Have the donor provide a specimen.



STEP 2 ←

Verify temperature is within range using the affixed temperature strip. (90 -100 F)

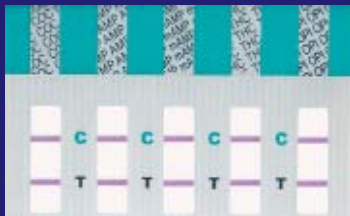


STEP 3 →

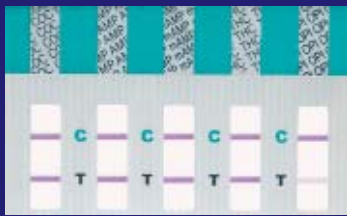
Remove the plastic key from the cap and insert it into the side of the cup, and depress the plunger to activate the test. Remove the front label to read the test results. Negatives can be read immediately and positives should be interpreted at 5 minutes.



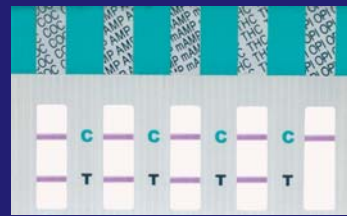
Interpreting the Results



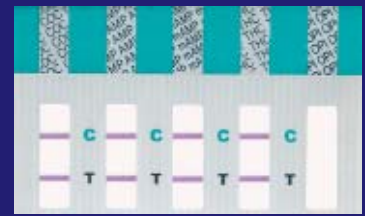
NEGATIVE RESULT
A Negative test is indicated by the presence of a test line for each designated drug.



NEGATIVE RESULT
The presence of a very light colored "T" line indicates a Negative test.



POSITIVE RESULT
A Positive test is indicated by the Presence of a "C" line and the Absence of a "T" line. Wait 5 minutes to read Positive Results.



INVALID RESULT
An Invalid test is indicated only when the "C" line is completely missing in one or more test windows. If this happens, run another test.