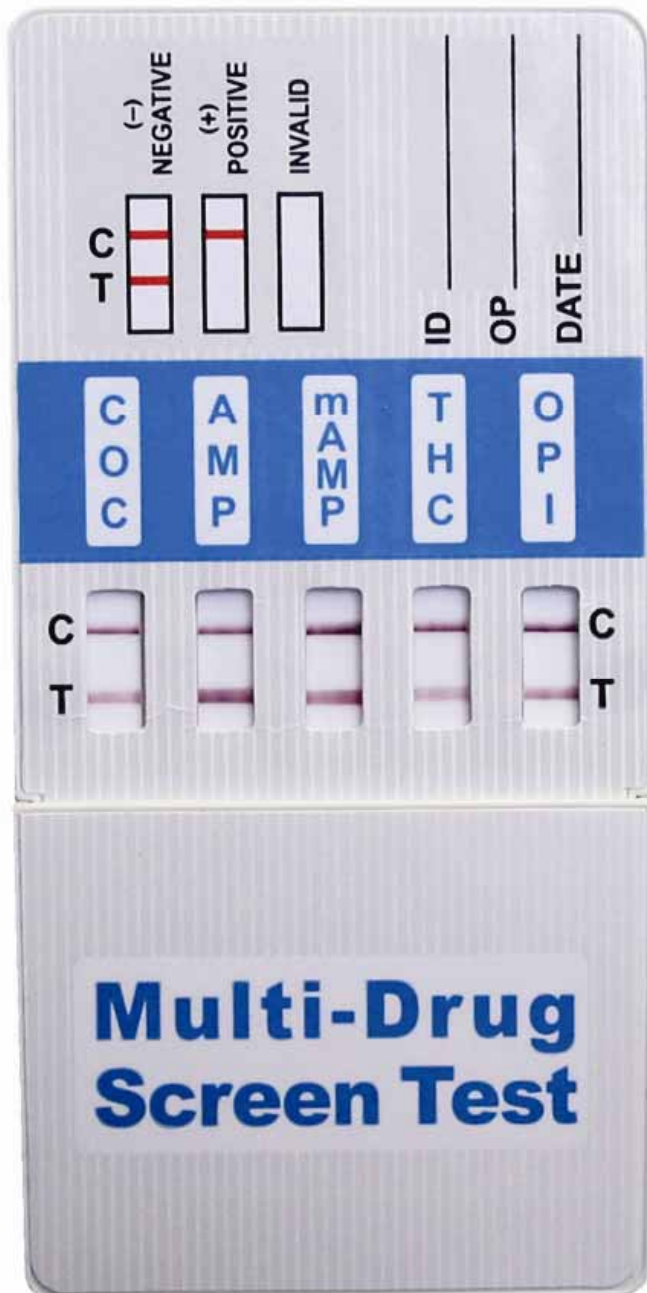




# Drugs of Abuse Dip Card



- Test for up to 10 drugs on single device
- Negative results within 1-2 minutes
- Easy to use

If you have any questions please contact your sales representative.

# Drugs of Abuse Dip Card Instructions

## STEP 1 →

Have the donor provide a specimen in the Collection Cup and return with Slotted lid in place



Temp. Indicator

## ← STEP 2

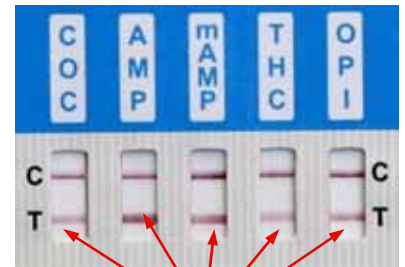
Verify temperature is within range on the temperature strip. (90 –100°F)

## ← STEP 3

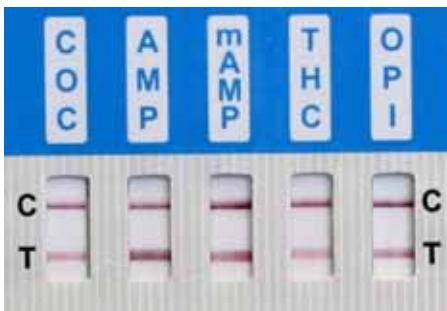
Insert the Card through the slotted lid in the collection cup

## STEP 4 →

Test will run in 1 – 2 minutes. Read results when lines appear.

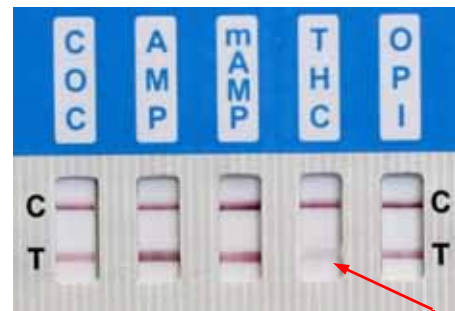


Lines



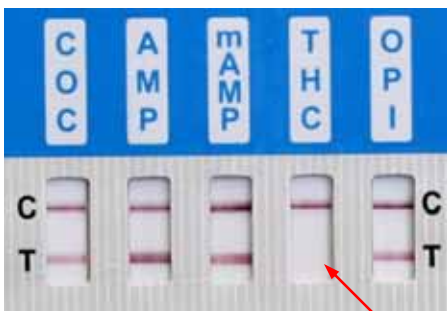
### NEGATIVE RESULT

A **Negative** test is indicated by the presence of a test line for each designated drug.



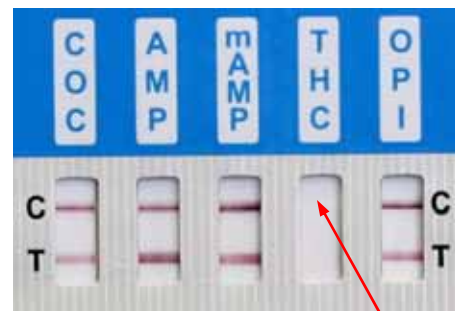
### NEGATIVE RESULT

This is also a **Negative** screen. Even a **very light** colored line indicates a negative result.



### POSITIVE RESULT →

A **Non-Negative** test is indicated by the presence of only a "C" control line and the **ABSENCE** of the test line for the designated drug.



### INVALID RESULT

An **Invalid** test is indicated only when the "C" control lines and the "T" test lines are completely missing in one or more of the test windows. In the event of an invalid test a second test should be run.

**Wait 5 minutes to read Non-Negative Results**